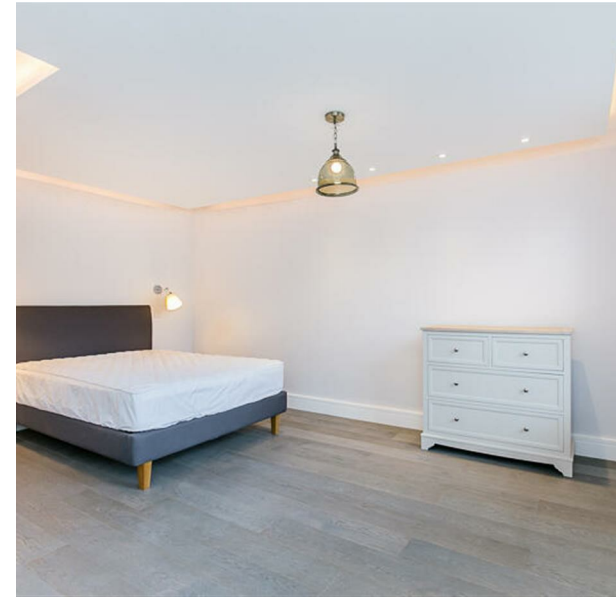


FLAT 3, 7 THE LANCHESTERS FULHAM PALACE ROAD, LONDON, W6 9ER
£2,495 PER MONTH
COUNCIL TAX BAND: C

TRISPENS



A LUXURY, LARGER THAN AVERAGE, FIRST-FLOOR ONE-BEDROOM APARTMENT, FULLY FURNISHED, AND IN AN IMMACULATE CONDITION CLOSE TO PUBLIC TRANSPORT AND SHOPS.

RECENTLY REFURBISHED TO THE HIGHEST OF STANDARDS, THIS LUXURY FIRST FLOOR ONE BED IS IN IMMACULATE CONDITION AND ARGUABLY ONE OF THE BIGGEST AT THIS PRICE IN HAMMERSMITH AT 60 SQUARE METRES! SET WELL BACK FROM THE BUSY ROAD ON ROSEDEW ROAD AND SITUATED ON THE FIRST FLOOR THE APARTMENT HAS WOODEN FLOORS THROUGHOUT AND IT IS NEUTRALLY DECORATED, THE KITCHEN IS VIRTUALLY BRAND NEW AND THERE IS A VIDEO ENTRY SYSTEM AND A 55-INCH SONY BRAVIA TV. THE BEDROOM IS TO THE REAR AND IS GENEROUSLY SIZED WITH AMPLE FITTED WARDROBES. THERE IS A SMART SHOWER ROOM OFF THE BEDROOM. PARKING IS AVAILABLE IN THE SECURE, GATED CARPARK, TO THE REAR FOR £10 PER WEEK SUBJECT TO AVAILABILITY. THE LANCHESTERS IS A SHORT WALK TO HAMMERSMITH WHERE YOU WILL FIND ALL MANNER OF PLACES TO EAT AND DRINK. THE UNDERGROUND STATION HAS ACCESS TO THE PICCADILLY AND DISTRICT LINES AND HAMMERSMITH BUS STATION HAS OVER A DOZEN ROUTES. FOR THE DRIVER, THE A4 IS MOMENTS AWAY. THERE ARE THREE SUPERMARKETS AND EVEN A PRET WITHIN A MINUTE'S WALK FROM THE FLAT! EPC: B

TIM LAWLER 35 EMMANUEL ROAD
LONDON
SW12 0HH
07939557155
TIM@TRISPENS.CO.UK

